

YOKOHAMA CITY UNIVERSITY



PROSPECTUS 2019

Facts and Figures

YOKOHAMA

was voted no.1 as the “best city/neighbourhood to live in (within the Kanto region)” in 2018.

* SUUMO 2018年「住みたい街ランキング」by Recruit Sumai Company, Ltd.



We have a 6:4 student ratio of females to males.

* as of May 2018



Our main campus is only 18 minutes away from Yokohama Station and 37 minutes away from Tokyo (Shinagawa Station) on the Keikyū (Keihin Kyūkō) Line.

*using the Limited Express trains



90% of our students are actively involved in clubs, societies and/or volunteer activities.

YCU has 76 sports-related teams/clubs, and 74 arts/culture clubs (as of May 2018). The Volunteer Support Office helps our students discover volunteer opportunities in Japan, while our Office of International Affairs coordinates volunteering overseas.



98.9%

of our International College of Arts & Sciences* graduates are employed or in further study upon graduation.

* the International College of Arts & Sciences is the predecessor to the School of International Liberal Arts, School of Economics & Business Administration, and the School of Science
** all data are as of May 2018



We have a

97.7%

passing rate for the Japan Board of Medicine Certification (医師国家試験).



We have a

100%

passing rate for the National Nursing Examination (看護師国家試験).



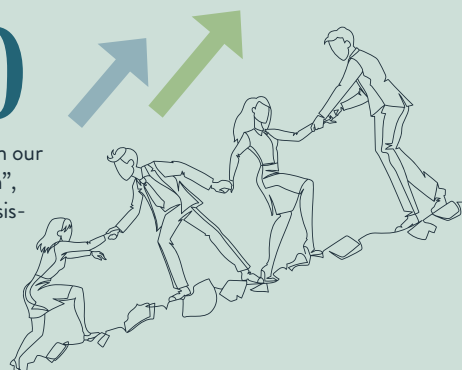
of our students actively seek support and guidance from our Career Support Center in a year. That's about a quarter of our student body!

* as of 2017

2770

alumni have registered with our “Career Supporter System”, in which alumni provide assistance and guidance to current students in their job-hunting activities.

* as of March 2019



Our students can participate in international volunteer programs (provided by the Council for International Educational Exchange) in over

35

countries, from anywhere between a week to a month over summer and/or spring break.

YCU was ranked **3rd** among universities in Japan

* Times Higher Education Japan University Rankings 2019

International Exchange



“[My Japanese language teacher] is so patient with every student; she is always willing to help us solve not just language problems but also daily life issues.”

Most of the Japanese students and teachers are very kind to foreign students. For example, people in the tea ceremony club, the club that I participate in YCU, are very friendly to me that there seemed to be no gap among us. It's really a good way to learn lots of Japanese culture. Thereafter, I recommend students to attend the club activity in YCU. Moreover, the Japanese language teacher is patient with every student, and she is always willing to help us solve not just language problems but also daily life issues.

Lee, Ming-Li

Tunghai University, Taiwan (ROC)



Study in Japanese

For students who are able and willing to study in Japanese-language conducted courses, a wide range of courses are available. The following online syllabi system can be used to search for courses.

<https://cmwebsv1.yokohama-cu.ac.jp/campusweb/slbsskgr.do>

Language Requirements

JLPT N2 or higher is desirable for students who wish to enrol in classes whereby the medium of instruction is Japanese. However, considerations can be made depending on recommendations from the student's home university. For those who wish to enrol in the Japanese Language classes, it is advisable for the student to have mastered beginner to lower-intermediate level Japanese (JLPT N5 to N3).



Study the Japanese Language

Students with beginner- to advanced- level Japanese proficiency who are interested in studying the Japanese language further during their time at YCU may choose the courses they are interested in from the list below.

Course Name	Level	Credit
Basic Japanese 1	Beginner 1	2
Basic Japanese 2	Beginner 1	2
Japanese 1	Beginner 2 (JLPT N4)	2
Japanese 2	Intermediate (JLPT N3)	2
Japanese 3	Advanced (JLPT N2-N1)	2
Practical Japanese (Writing A)	Intermediate - Advanced (JLPT N3-N1)	1
Practical Japanese (Writing B)		1
Practical Japanese (Writing C)		1
Practical Japanese (Speaking A)	Intermediate - Advanced (JLPT N3-N1)	1
Practical Japanese (Speaking B)		1
Practical Japanese (Speaking C)		1
Practical Japanese (Academic Japanese A)	Advanced (JLPT N2-N1)	1
Practical Japanese (Academic Japanese B)		1
Practical Japanese (Career Design for International Students A)		1
Practical Japanese (Career Design for International Students B)		1

In the Japanese language classes, we did not just learn Japanese, but also participated in activities such as making videos and presenting them to our Japanese peers, or reading and discussing current issues in Japan. Besides, the Japanese teachers are always ready to answer our questions, and teach us in detail, so we don't have to worry about our Japanese language abilities.

Kim Ji-Yun
Exchange Student
South Korea



YCU offers a number of courses in English. The university is relatively small in size, but this also brings advantages. Class sizes are small with a low student- teacher ratio. This also makes it easy to connect with Japanese students, which is also a great encouragement to learn some Japanese during the exchange.

Carla Harold
Exchange Student
Austria



Study in English in Japan

Spring Term

ACC20600	Introductory Accounting I
ACC20900	Introduction to IFRSs
ACC29800	Topics in Accounting A (Intensive)
ACC29900	Topics in Accounting B (Intensive)
ACC32200	Fundamentals of Investments
BIO34100	Molecular Toxicology
BUS22500	Global Organization Theory
BUS36200	Summer Program (Intensive)
BUS37600	Global Service Management
BUS37700	International Business I
CLE10150	Education in the World
ECO29600	Topics in Economics D (Intensive)
ECO29700	Topics in Economics C (Intensive)
ECO29800	Topics in Economics B (Intensive)
ECO29900	Topics in Economics A (Intensive)
ECO34100	Game Theory and Industrial Organization I
ECO39100	Sustainable Urban Development
EDU39100	Educational Sociology
ENV39100	Sustainable Urban Development (Intensive)
ILW30100	International Law A
INT21100	Global Politics
INT21200	Global Economics
INT29000	Technology and Society
INT29900	Politics and Society in Asia
INT31100	Global Peace
LIN11150	English Linguistics and Philology A
LIN39100	Language Education in Asia
LIT30100	Literature in English A
LIT31200	Japanese Literature in English A
LIT33400	Explication of American Literary Text A
PBL11850	Japan Studies: Youth Cultures
PBL11950	History of Modern Japan
PHY24100	Thermodynamics
PSY13150	Topics in Modern Psychopathology
SCI39100	Scientific Writing in English
SEM11350	Research about Japan by Foreigners
SEM11550	Comparing Education in the World
SEM11650	Japan from Foreigners' View A
SOC29200	Welfare and Employment in Japan
UCP29100	Building Sustainable Communities in Japan

Fall Term

ACC20700	Introductory Accounting II
ACC20800	Intermediate Accounting
ACC32300	Basics of Corporate Analysis and Valuation
BUS22200	Global Business Strategy
BUS22300	Global Innovation Management
BUS22400	Global Business Administration (Intensive)
BUS36100	Public Management
BUS37300	Global Leadership
BUS37400	Global Human Resource Development
BUS37500	Global Marketing
BUS37800	International Business II
BUS37900	Japanese Industry
BUS38000	Global Management in Japanese Companies
CUL13150	Understanding American and British Culture Aa
CUL13151	Understanding American and British Culture Ab
CUL13250	Understanding American and British Culture Ba
CUL13251	Understanding American and British Culture Bb
CUL34100	European Culture in English
DEV21100	Social Development
ECO29300	Advanced Topics in Economics I
ECO29400	Advanced Topics in Economics II
ECO30900	Topics in Macroeconomics
ECO34200	Game Theory and Industrial Organization II
ECO40900	Advanced Topics in Macroeconomics
ECO41700	Economic Analysis III
ECO41800	Economic Analysis I
ECO41900	Economic Analysis II
EDU39200	International Education
HIS39100	Religions in Japanese Culture
ILW30200	International Law B
INT27100	Overseas Fieldwork B (United Nations) (Intensive)
INT29500	Japanese Foreign Policy A
INT30300	Global Issues
LIN20100	General Linguistics
LIN39200	Practice in Language Education
LIT30200	Literature in English B
LIT31300	Japanese Literature in English B
LIT33500	Explication of American Literary Text B
LIT34600	Elements of Fiction
PBL10450	Risk Management ^{*1}
PBL10550	Japanese Globalization in Comparative Context ^{*1}
PSY10350	Introduction to Psychology
PUP23100	Global Public Policy
SEM11651	Japan from Foreigners' View B
SEM11750	Global Communications
SOC39100	Japanese Pragmatics
SOC39200	Language in Japanese Society

Language Requirements

If the student is not a native English speaker, we will require the student to show that they have an adequate knowledge of the English language, should they wish to enrol in classes conducted in English. The minimum requirement is a TOEFL iBT 61 or equivalent.

^{*1} Project Based Learning Course

Planning Your Courses

Credit System

One Japanese credit represents 45 hours of study. There is no specific “full work load” for exchange students, but we advise international students to take at least 10 - 12 credits (450 - 540 hours) per semester to maintain their “student” status of residence in Japan. The maximum number of credits a student can take in one semester is 24 (1080 hours).

Academic Calendar & Class Period

Spring Term April 1st, 2019 - September 21st, 2019
Fall Term September 22nd, 2019 - March 31st, 2020

	Hakkei / Tsurumi / Maioka campus		Fukuura campus			
	Grad. Schools	Undergraduate ^{*1}	School of Medicine Nursing Course	School of Medicine Medical Course ^{*2}	GS of Medicine Dept. of Medicine	GS of Medicine Dept. of Nursing
1 時限	08:50 - 10:20					
2 時限	10:30 - 12:00					
3 時限	12:50 - 14:20					
4 時限	14:30 - 16:00					
5 時限	16:10 - 17:40					
6 時限	17:50 - 19:20				17:50 - 19:20	
7 時限	19:30 - 21:00					19:30 - 21:00

時限 *jigen* = (class) period

*1 All undergraduate schools besides the School of Medicine

*2 Applicable to first-year students only

Grading System

Grade	Evaluation	GPA
90 - 100%	SA (Excellent)	4.0
80 - 89%	A (Very Good)	3.0
70 - 79%	B (Good)	2.0
60 - 69%	C (Sufficient)	1.0
59% and below	D (Fail)	0.0

